

NOTES:

- ACOUSTIC LINED UNIT AS STANDARD.
- LEFT HAND UNIT AS DRAWN, RIGHT HAND OPPOSITE HAND, (HEATING AND COOLING CONNECTIONS REVERSED SEE SCRAP SIDE VIEW OF RIGHT HAND UNIT). UNITS ARE HANDED LOOKING INTO THE DISCHARGE OF THE UNIT, WITH THE UNIT IN ITS INSTALLED ORIENTATION. THE ABOVE UNIT IS DETAILED AS LEFT HAND COIL CONNECTIONS.

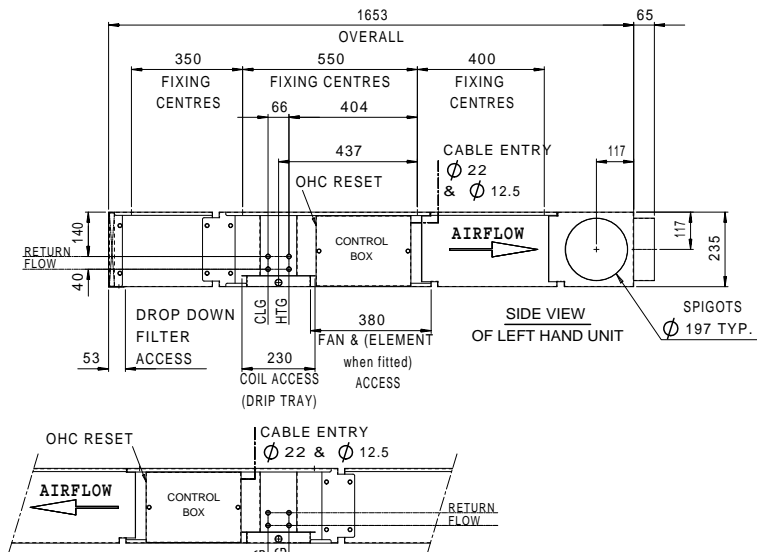
SPIGOT POSITIONS ARE IDENTIFIED FROM LEFT TO RIGHT WHEN LOOKING INTO THE DISCHARGE, WITH THE UNIT IN ITS INSTALLED ORIENTATION. SPIGOT POSITIONS ARE REGARDLESS OF COIL TAIL HANDINGS.

- FILTER(S) CAN BE EITHER SIDE REMOVAL OR DROP DOWN AND SLIDE OUT.

- UNIT FIXINGS (BY OTHERS) TO INCLUDE LARGE WASHERS, $\phi 32$ MAXIMUM. ALTERNATIVELY ISOLATION MOUNTS COMPLETE WITH WASHERS ARE AVAILABLE FROM DIFFUSION.

- UNIT ACCESS REQUIREMENTS: IT IS RECOMMENDED THAT FOR EFFICIENT SERVICEABILITY AND MAINTENANCE OF THESE FAN COIL UNITS THE MINIMUM SITE ACCESS SHOULD BE AS DETAILED ABOVE.

- KEY TO ABBREVIATIONS:
CLG = COOLING
HTG = HEATING
ID = INSIDE DIAMETER
OD = OUTSIDE DIAMETER
OHC = OVERHEAT CUTOFF RESET BUTTON (REQUIRED ON ELECTRIC HEAT UNITS ONLY).



SCRAP SIDE VIEW OF RIGHT HAND UNIT
SHOWING HTG & CLG CONNECTIONS, CABLE ENTRY
AND OHC RESET BUTTON POSITION REVERSED

		ACCESS REQUIREMENTS				$\phi 197$ SPIGOTS		
UNIT	WEIGHT kg	A	B	C	D	S SPIGOT PITCH (TYP.)	TOTAL No. OFF INCLUDING SIDES	SPIGOT POSITIONS REGARDLESS OF HANDING FOR SCHEDULE PURPOSES NTS.
04/1	38	565	530	503	1150	250	4	
06/1	46	715	680	653	1300	350	4	
08/1	55	915	880	853	1500	350	4	
08/2	62	915	880	853	1500	350	4	
10/1	64	1115	1080	1053	1700	350	5	
10/2	71	1115	1080	1053	1700	350	5	
12/2	80	1315	1280	1253	1900	350	5	
14/2	90	1515	1480	1453	2100	350	6	
14/3	90	1515	1480	1453	2100	350	6	
16/2	98	1715	1680	1653	2300	350	6	
16/3	98	1715	1680	1653	2300	350	6	
18/3	106	1915	1880	1853	2500	350	7	
18/4	118	1915	1880	1853	2500	350	7	

REV.	MOD.NO.	DATE	DRN				ALL DIMENSIONS IN mm THIRD ANGLE PROJECTION	DRAWING SCALE: 1:1	PRINT SCALE: N.T.S.	DRAWN MW	
3	MIN. MOD.	25-07-23	MW				METALWORK TOLERANCES UNLESS OTHERWISE STATED: DIMENSIONAL ± 0.5 mm ANGULAR $\pm 1^\circ$	MATERIAL:		DATE 24-02-23	TITLE: GENERAL ARRANGEMENT HIGHLINE 235 DEEP FAN COIL UNIT RANGE C/W 300 LONG ATTENUATORS AND $\phi 197$ DISCHARGE PLENUM HL235-WHCH-04-06-08-10-12-14-16-18-30A+30ACP
2	DRG SHT MOD.	28-03-23	MW							CHECKED	
1	REQ9690	09-03-23	MW							DATE	
							G.A. TOLERANCES UNLESS OTHERWISE STATED: DIMENSIONAL ± 4 mm ANGULAR $\pm 1^\circ$	FINISH:		APP'D	JOB: STANDARD OPTION
										DATE	

Diffusion

Address: 47 Central Avenue, West Molesey, Surrey, KT8 2QZ
Telephone: +44 (0) 20 8783 0033 Email: cooling@diffusion-group.com
Website: www.diffusion-group.com

TITLE: GENERAL ARRANGEMENT
HIGHLINE 235 DEEP FAN COIL UNIT RANGE
C/W 300 LONG ATTENUATORS AND $\phi 197$ DISCHARGE PLENUM
HL235-WHCH-04-06-08-10-12-14-16-18-30A+30ACP

JOB: STANDARD OPTION

DRG.NO. A1/40531